

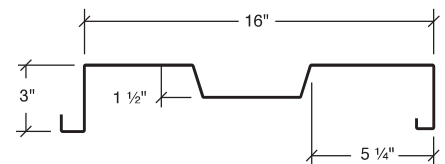
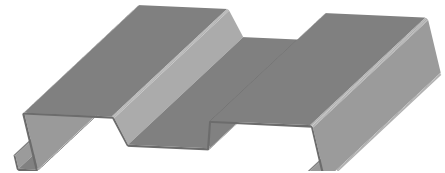
CONCEALED FASTENING SYSTEMS



ShadowRib™ is a 3" deep panel that combines aesthetics, economy and function to bring definition to metal structures. ShadowRib™ is a proven performer and a versatile tool to the designer. Structural strength in the ShadowRib™ panel is accomplished without sacrificing appearance or design flexibility. The fluted face creates distinctive shadow lines.

FEATURES AND BENEFITS

- Panels may be secured to the structure from the outside of the building with the ShadowRib™ concealed clip or from inside the building with an expansion fastener. Both are positive fastened methods that create a secure interlock between panel and structure.
- The ShadowRib™ panel can be used for walls, fascias and equipment screens. Apply the panel over light-gauge framing, purlins, girts, structural steel and joists.
- ShadowRib™ carries Florida approval.



PRODUCT SPECIFICATIONS

Applications: Wall

Coverage Widths: 16"

Panel Attachment: Concealed Fastening System
Outside Panel Attachment – ShadowRib™ Panel Clip

Gauges: 29 (standard); 22 (optional)

Finishes: Smooth (standard); Embossed (optional)

Coatings: Galvalume Plus®, Signature® 200, Signature® 300,
Signature® 300 Metallic

CATEGORY	CHARACTERISTIC	TEST METHOD	PURPOSE	RESULT
ENVIRONMENTAL	Negative Wind Loads	ASTM E 1592	Provides a standard procedure to evaluate or confirm structural performance under uniform static air pressure difference	See Load Chart Section
	Positive Wind Load	AISI S100	North American Specification for the Design of Cold-Formed Steel Structural Members	See Section Properties and Allowable Load Table Section
ROOF LISTINGS	Roof Performance - Florida Approval	ASTM E 1592	Florida product approval is the approval of products and systems, which comprise the building envelope and structural frame, for compliance with the structural requirements of the Florida Building Code.	See FL# 119175